

AN ORDINANCE TO GRANT A DEED FOR PORTIONS OF VACATED STREETS KNOWN AS CRESTVIEW DRIVE AND GREEN FOREST PLACE LOCATED WITHIN THE AMENDED ROLLING ACRE SUBDIVISION TO WESTPORT HOMES, INC, AND DECLARING AN EMERGENCY.

WHEREAS, portions of vacated streets known as Crestview Drive and Green Forest Place once existing within the amended Rolling Acres Subdivision, which was conveyed to the village of Lithopolis by plat of record in Plat Cabinet 2, Slot 92, all references to the Fairfield County Recorder's Office, were vacated by this council on March 10, 2015, by Ordinance 2-15, and,

WHEREAS, village council finds that there is good cause to deed said vacated streets to Westport Homes, Inc., as described more fully below, the same being 2.442 acres, as described more fully in Exhibit A, attached and incorporated by reference, and such conveyance will not be detrimental to the general interest of the citizens of the village:

NOW, THEREFORE, BE IT ORDAINED BY THE COUNCIL OF THE VILLAGE OF LITHOPOLIS, OHIO:

Section 1. That the portion of the streets previously vacated, and more fully described in the survey map attached as Exhibit B, and incorporated by reference, be hereby deeded to Westport Homes, Inc.

Section 2. That the Village Administrator or the Clerk for the village is authorized to execute a deed of conveyance for said 2.442 acres of vacated streets to Westport Homes, Inc.

Section 3. That the Village Administrator or Clerk of the village of Lithopolis is hereby directed to file a copy of this ordinance with the Fairfield County Recorder evidencing the authority granted by this council to grant a deed for the described streets to Westport Homes, Inc.

Section 4. This ordinance is hereby declared to be an emergency measure necessary for the immediate preservation of the public peace, health and safety, and for the further reasons that the acceptance of the vacation of the streets must be enacted to take advantage of the upcoming building season, to secure needed revenue for the village, and to facilitate the completion of utilities and infrastructure necessary for the citizens of the village. This ordinance shall be in full force and effect at the earliest date permitted by law.

DATE PASSED: 3/10, 2015

ATTEST: [Signature] SIGNED
CLERK

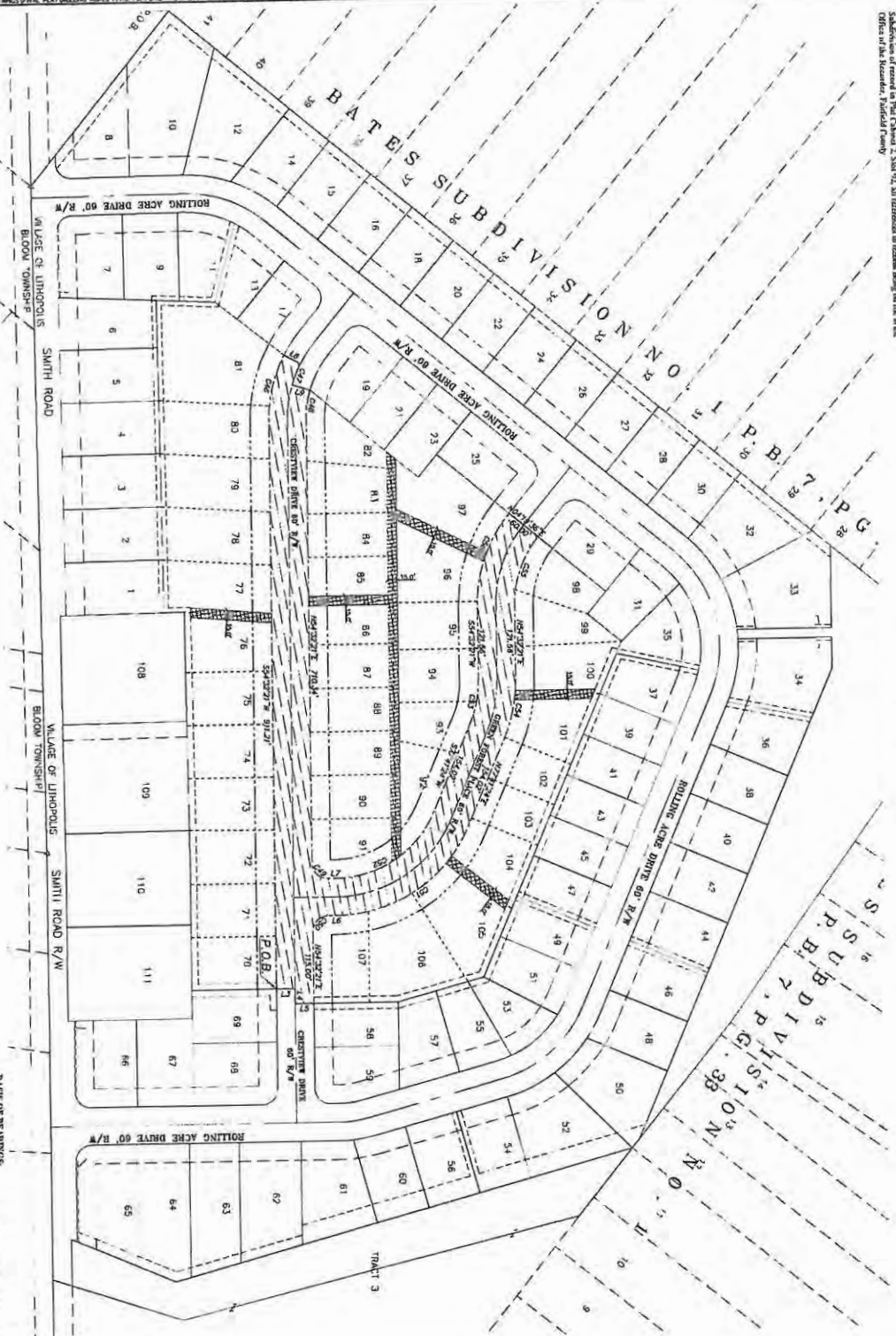
[Signature]
MAYOR

DATE: 3/10/15 DATE: 3/10/15

APPROVED AS TO FORM:
[Signature]
JON BROWNING
VILLAGE SOLICITOR

Amended Rolling Acres Subdivision

PLAT CMB 2, SLOT 92
2.442 ACRES RIGHT OF WAY VACATION EXHIBIT



RETURN TO:
State of Ohio, County of Fairfield, Township of Blount, Village of Lincolnton,
Subdivision 7, Township 7, Range 29 and being all and of the Final Plat, Amended Rolling Acres
Subdivision as recorded in Plat CMB 2, Slot 92, all addresses on Rolling Acres Drive on the
Office of the Recorder, Village of Lincolnton.

BASIS OF THE RECORD
This plat is a bearing of N 54°37'17" E was laid on Certificate of Correct
Town Line (277 Right of Way), and is based on the Ohio State Plane Coordinate System, South
Zone, NAD83. Said bearing was established by State and TRC GPS Observation, and was
determined by using National Coordinate Survey, 7-2008. The monument is based on a
survey completed by Michael W. Watton in June of 2014.

THIS SHEET IS TO SHOW THE RELEASE OF CERTAIN RIGHT OF WAY
OR RECORD IN PLAT CMB 2, SLOT 92.
NOTE: "X" RELEASE OF CERTAIN EASEMENTS AND RIGHT OF WAY
All rights, easements, rights of way and set backs for the
subdivision plat entitled "Amended Rolling Acres Subdivision of
Rolling Acres Subdivision" as recorded in Plat CMB 2, Slot 92, of record in the Office of the Recorder
are hereby released and are hereby released and are
referred to as "released" and "not".

- LEGEND:**
- Right of Way to be released. See Note "X".
 - Comments to be released. See Note "X".
 - Set Backs to be released. See Note "X".

Line #	Direction	Length	Area
L1	S83°27'51" W	26.00'	0.0000
L2	S54°37'17" E	26.00'	0.0000
L3	S53°27'51" E	14.45'	0.0000
L4	N52°07'39" W	14.45'	0.0000
L5	N74°24'38" W	30.00'	0.0000
L6	N18°24'54" W	30.00'	0.0000

Curve #	Radius	Chord	Chord Bearing	Chord Area
C1	225.00'	27°15'35"	108.84'	5883.5307'
C2	185.00'	19°31'05"	81.11'	4818.8107'
C3	165.00'	18°00'00"	75.00'	4500.0000'
C4	150.00'	16°43'00"	69.63'	4183.5107'
C5	135.00'	15°30'00"	64.95'	3877.5000'
C6	120.00'	14°21'00"	60.72'	3582.5107'
C7	105.00'	13°16'00"	56.91'	3298.5107'
C8	90.00'	12°14'00"	53.49'	3025.5107'
C9	75.00'	11°15'00"	50.43'	2763.5107'
C10	60.00'	10°19'00"	47.70'	2512.5107'
C11	45.00'	9°25'00"	45.27'	2272.5107'
C12	30.00'	8°33'00"	43.11'	2043.5107'
C13	15.00'	7°43'00"	41.19'	1825.5107'
C14	15.00'	6°54'00"	39.50'	1618.5107'
C15	15.00'	6°06'00"	38.03'	1422.5107'
C16	15.00'	5°19'00"	36.76'	1237.5107'
C17	15.00'	4°33'00"	35.67'	1062.5107'
C18	15.00'	3°48'00"	34.74'	907.5107'
C19	15.00'	3°04'00"	33.95'	772.5107'
C20	15.00'	2°21'00"	33.29'	657.5107'
C21	15.00'	1°39'00"	32.75'	562.5107'
C22	15.00'	0°58'00"	32.32'	487.5107'
C23	15.00'	0°18'00"	31.99'	432.5107'
C24	15.00'	0°38'00"	31.75'	397.5107'
C25	15.00'	0°58'00"	31.59'	382.5107'
C26	15.00'	1°18'00"	31.50'	387.5107'
C27	15.00'	1°38'00"	31.47'	402.5107'
C28	15.00'	1°58'00"	31.49'	427.5107'
C29	15.00'	2°18'00"	31.55'	462.5107'
C30	15.00'	2°38'00"	31.65'	507.5107'
C31	15.00'	2°58'00"	31.79'	562.5107'
C32	15.00'	3°18'00"	31.96'	627.5107'
C33	15.00'	3°38'00"	32.16'	702.5107'
C34	15.00'	3°58'00"	32.38'	787.5107'
C35	15.00'	4°18'00"	32.61'	892.5107'
C36	15.00'	4°38'00"	32.85'	1017.5107'
C37	15.00'	4°58'00"	33.10'	1162.5107'
C38	15.00'	5°18'00"	33.35'	1327.5107'
C39	15.00'	5°38'00"	33.60'	1512.5107'
C40	15.00'	5°58'00"	33.85'	1717.5107'
C41	15.00'	6°18'00"	34.10'	1942.5107'
C42	15.00'	6°38'00"	34.35'	2187.5107'
C43	15.00'	6°58'00"	34.60'	2452.5107'
C44	15.00'	7°18'00"	34.85'	2737.5107'
C45	15.00'	7°38'00"	35.10'	3042.5107'
C46	15.00'	7°58'00"	35.35'	3367.5107'
C47	15.00'	8°18'00"	35.60'	3712.5107'
C48	15.00'	8°38'00"	35.85'	4077.5107'
C49	15.00'	8°58'00"	36.10'	4462.5107'
C50	15.00'	9°18'00"	36.35'	4867.5107'
C51	15.00'	9°38'00"	36.60'	5292.5107'
C52	15.00'	9°58'00"	36.85'	5737.5107'
C53	15.00'	10°18'00"	37.10'	6202.5107'
C54	15.00'	10°38'00"	37.35'	6687.5107'
C55	15.00'	10°58'00"	37.60'	7192.5107'
C56	15.00'	11°18'00"	37.85'	7717.5107'
C57	15.00'	11°38'00"	38.10'	8262.5107'
C58	15.00'	11°58'00"	38.35'	8827.5107'
C59	15.00'	12°18'00"	38.60'	9412.5107'
C60	15.00'	12°38'00"	38.85'	10017.5107'
C61	15.00'	12°58'00"	39.10'	10642.5107'
C62	15.00'	13°18'00"	39.35'	11287.5107'
C63	15.00'	13°38'00"	39.60'	11952.5107'
C64	15.00'	13°58'00"	39.85'	12637.5107'
C65	15.00'	14°18'00"	40.10'	13342.5107'
C66	15.00'	14°38'00"	40.35'	14067.5107'
C67	15.00'	14°58'00"	40.60'	14812.5107'
C68	15.00'	15°18'00"	40.85'	15577.5107'
C69	15.00'	15°38'00"	41.10'	16362.5107'
C70	15.00'	15°58'00"	41.35'	17167.5107'
C71	15.00'	16°18'00"	41.60'	17992.5107'
C72	15.00'	16°38'00"	41.85'	18837.5107'
C73	15.00'	16°58'00"	42.10'	19702.5107'
C74	15.00'	17°18'00"	42.35'	20587.5107'
C75	15.00'	17°38'00"	42.60'	21492.5107'
C76	15.00'	17°58'00"	42.85'	22417.5107'
C77	15.00'	18°18'00"	43.10'	23362.5107'
C78	15.00'	18°38'00"	43.35'	24327.5107'
C79	15.00'	18°58'00"	43.60'	25312.5107'
C80	15.00'	19°18'00"	43.85'	26317.5107'
C81	15.00'	19°38'00"	44.10'	27342.5107'
C82	15.00'	19°58'00"	44.35'	28387.5107'
C83	15.00'	20°18'00"	44.60'	29452.5107'
C84	15.00'	20°38'00"	44.85'	30537.5107'
C85	15.00'	20°58'00"	45.10'	31642.5107'
C86	15.00'	21°18'00"	45.35'	32767.5107'
C87	15.00'	21°38'00"	45.60'	33912.5107'
C88	15.00'	21°58'00"	45.85'	35077.5107'
C89	15.00'	22°18'00"	46.10'	36262.5107'
C90	15.00'	22°38'00"	46.35'	37467.5107'
C91	15.00'	22°58'00"	46.60'	38692.5107'
C92	15.00'	23°18'00"	46.85'	39937.5107'
C93	15.00'	23°38'00"	47.10'	41202.5107'
C94	15.00'	23°58'00"	47.35'	42487.5107'
C95	15.00'	24°18'00"	47.60'	43792.5107'
C96	15.00'	24°38'00"	47.85'	45117.5107'
C97	15.00'	24°58'00"	48.10'	46462.5107'
C98	15.00'	25°18'00"	48.35'	47827.5107'
C99	15.00'	25°38'00"	48.60'	49212.5107'
C100	15.00'	25°58'00"	48.85'	50617.5107'
C101	15.00'	26°18'00"	49.10'	52042.5107'
C102	15.00'	26°38'00"	49.35'	53487.5107'
C103	15.00'	26°58'00"	49.60'	54952.5107'
C104	15.00'	27°18'00"	49.85'	56437.5107'
C105	15.00'	27°38'00"	50.10'	57942.5107'
C106	15.00'	27°58'00"	50.35'	59467.5107'
C107	15.00'	28°18'00"	50.60'	61012.5107'
C108	15.00'	28°38'00"	50.85'	62577.5107'
C109	15.00'	28°58'00"	51.10'	64162.5107'
C110	15.00'	29°18'00"	51.35'	65767.5107'
C111	15.00'	29°38'00"	51.60'	67392.5107'
C112	15.00'	29°58'00"	51.85'	69037.5107'
C113	15.00'	30°18'00"	52.10'	70702.5107'
C114	15.00'	30°38'00"	52.35'	72387.5107'
C115	15.00'	30°58'00"	52.60'	74092.5107'
C116	15.00'	31°18'00"	52.85'	75817.5107'
C117	15.00'	31°38'00"	53.10'	77562.5107'
C118	15.00'	31°58'00"	53.35'	79327.5107'
C119	15.00'	32°18'00"	53.60'	81112.5107'
C120	15.00'	32°38'00"	53.85'	82917.5107'
C121	15.00'	32°58'00"	54.10'	84742.5107'
C122	15.00'	33°18'00"	54.35'	86587.5107'
C123	15.00'	33°38'00"	54.60'	88452.5107'
C124	15.00'	33°58'00"	54.85'	90337.5107'
C125	15.00'	34°18'00"	55.10'	92242.5107'
C126	15.00'	34°38'00"	55.35'	94167.5107'
C127	15.00'	34°58'00"	55.60'	96112.5107'
C128	15.00'	35°18'00"	55.85'	98077.5107'
C129	15.00'	35°38'00"	56.10'	100062.5107'
C130	15.00'	35°58'00"	56.35'	102067.5107'
C131	15.00'	36°18'00"	56.60'	104092.5107'
C132	15.00'	36°38'00"	56.85'	106137.5107'
C133	15.00'	36°58'00"	57.10'	108202.5107'
C134	15.00'	37°18'00"	57.35'	110287.5107'
C135	15.00'	37°38'00"	57.60'	112392.5107'
C136	15.00'	37°58'00"	57.85'	114517.5107'
C137	15.00'	38°18'00"	58.10'	116662.5107'
C138	15.00'	38°38'00"	58.35'	118827.5107'
C139	15.00'	38°58'00"	58.60'	121012.5107'
C140	15.00'	39°18'00"	58.85'	123217.5107'
C141	15.00'	39°38'00"	59.10'	125442.5107'
C142	15.00'	39°58'00"	59.35'	127687.5107'
C143	15.00'	40°18'00"	59.60'	129952.5107'
C144	15.00'	40°38'00"	59.85'	132237.5107'
C145	15.00'	40°58'00"	60.10'	134542.5107'
C146	15.00'	41°18'00"	60.35'	136867.5107'
C147	15.00'	41°38'00"	60.60'	139212.5107'
C148	15.00'	41°58'00"	60.85'	141577.5107'
C149	15.00'	42°18'00"	61.10'	143962.5107'
C150	15.00'	42°38'00"	61.35'	146367.5107'
C151	15.00'	42°58'00"	61.60'	148792.5107'
C152	15.00'	43°18'00"	61.85'	151237.5107'
C153	15.00'	43°38'00"	62.10'	153702.5107'
C154	15.00'	43°58'00"	62.35'	156187.5107'
C155	15.00'	44°18'00"	62.60'	158692.5107'
C156	15.00'	44°38'00"	62.85'	161217.5107'
C157	15.00'	44°58'00"	63.10'	163762.5107'
C158	15.00'	45°18'00"	63.35'	166327.5107'
C159	15.00'	45°38'00"	63.60'	168912.5107'
C160	15.00'	45°58'00"	63.85'	171517.5107'
C161	15.00'	46°18'00"	64.10'	174142.5107'
C162	15.00'	46°38'00"	64.35'	176787.5107'
C163	15.00'	46°58'00"	64.60'	179452.5107'
C164	15.00'	47°18'00"	64.85'	182137.5107'
C165	15.00'	47°38'00"	65.10'	184842.5107'
C166	15.00'	47°58'00"	65.35'	187567.5107'
C167				